

Inter-Hemispheric Fiber Tracts Between Bilateral Superior Temporal Gyrus Gray Matter and Its Asymmetry in Chronic Schizophrenia

Hsiao Piau Ng^{1,2}, Marek Kubicki^{1,3}, Paula Pelavin¹, Yogesh Rathi^{1,3}, James Malcolm¹, Diandra Lucia¹, Margaret Niznikiewicz³, Ron Kikinis⁴, Robert W. McCarley³, Martha E. Shenton^{1,3,4}

¹Psychiatry Neuroimaging Laboratory, Department of Psychiatry, Brigham and Women's Hospital, Harvard Medical School, Boston, MA, USA

²Singapore Bioimaging Consortium, Agency for Science Technology and Research, Singapore

³Clinical Neuroscience Division, Laboratory of Neuroscience Department of Psychiatry, VA Boston Healthcare System, Harvard Medical School, Brockton, MA, USA

⁴Surgical Planning Laboratory, MRI Division, Department of Radiology, Brigham and Women's Hospital, Harvard Medical School, Boston, MA, USA



ABSTRACT

- Recent studies suggest loss of efficient inter-hemispheric communication and cortex asymmetry as possible sources of schizophrenia etiology.
- We investigate the inter-hemispheric connection between bilateral superior temporal gyrus (STG) using diffusion tensor imaging (DTI) and correlate DTI measures to asymmetry measures of STG gray matter in this study.
- Decreased fractional anisotropy (FA), increased trace, axial diffusivity (AD) and radial diffusivity (RD) were found in inter-hemispheric fiber tracts connecting bilateral STG gray matter belonging to chronic schizophrenics.
- In chronic schizophrenics, correlation was found between FA, mode and cortical thickness asymmetry, as well as AD and volume asymmetry.

BACKGROUND

- The STG is part of the temporal lobe in the human brain.
- Abnormalities in STG gray matter are commonly reported in magnetic resonance imaging (MRI) studies involving schizophrenics [1].
- Loss of efficient inter-hemispheric communication [2] and cortex asymmetry [3] are possible sources of schizophrenia pathology.
- These led us to hypothesize differences in inter-hemispheric connection between bilateral STG gray matter and its asymmetry measures.

MATERIALS

Subjects:

- 27 patients with chronic schizophrenia (SZ) and 26 normal controls (NC) are involved in this study, with their demographics as shown below:

	SZ		NC		Two Sample t-test (2-tailed)	
	(n=27)	(n=26)	df	t	p	
Age (yr)	44.22 ± 9.59 (47)	38.88 ± 11.62 (40.5)	51	-1.827	0.074	
Socioeconomic						
Status (SES) *	3.37 ± 1.08 (3)	2.04 ± 0.81 (2)	49	-4.928	0.001**	
Parental SES *	2.52 ± 1.12 (3)	2.22 ± 1.17 (2)	46	-0.916	0.364	
Education (yr)	13.20 ± 1.82 (13)	14.67 ± 1.95 (14.5)	49	2.772	0.008**	
Handedness	0.72 ± 0.24 (0.73)	0.76 ± 0.19 (0.8)	43	0.619	0.539	
WAIS-III IQ	98.63 ± 14.28 (97)	109.44 ± 17.71 (110)	41	2.193	0.034*	
Duration of illness (yr)	16.78 ± 10.05 (19)	-	-	-	-	
Age at onset	23.61 ± 5.80 (23)	-	-	-	-	

Data Acquisition:

- A 3T GE scanner was used.
- Parameters for structural MRI: TR=7.48ms TE=3ms FOV=256mm, 176 axial slices with 1mm thickness each.
- Parameters for DTI: 51 directions, TR=17000ms TE=78ms FOV=24cm, 144x144 encoding steps, 85 axial slices with 1.7mm thickness each.

FIGURES

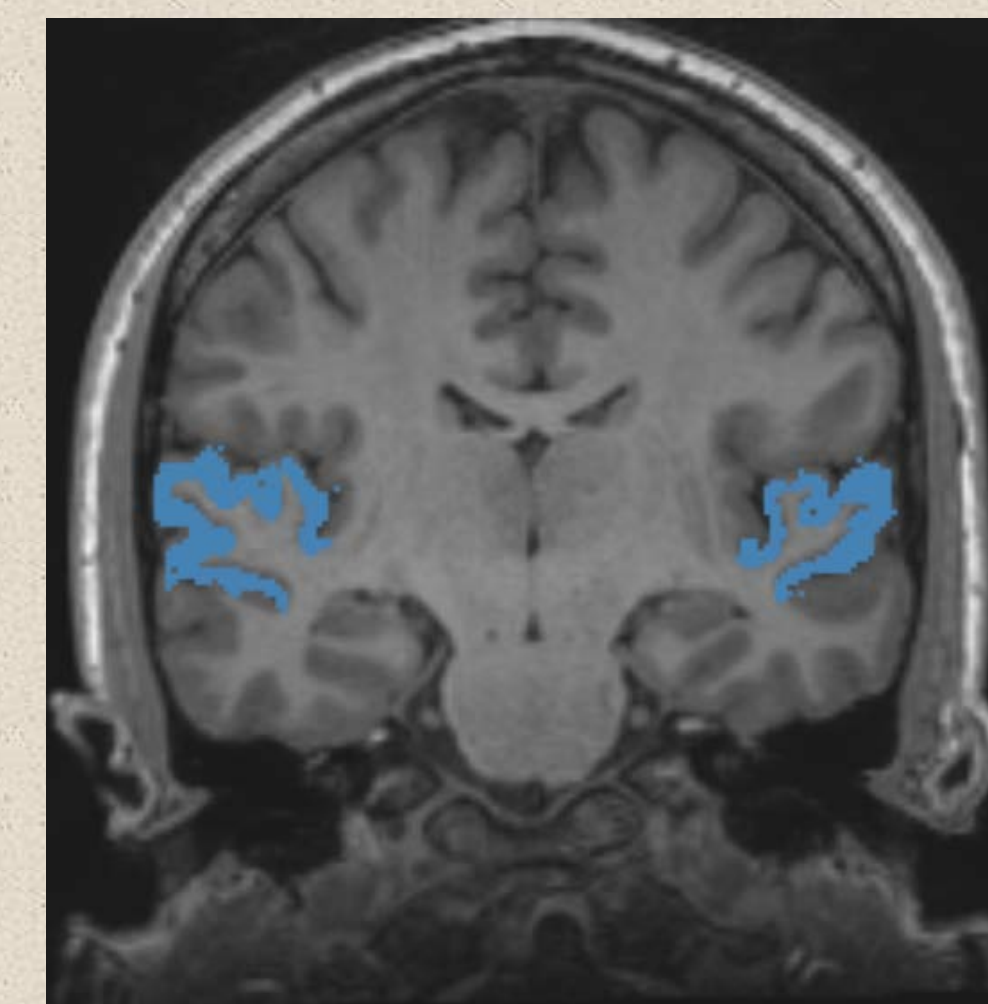


Figure 1: Coronal view of delineated STG gray matter

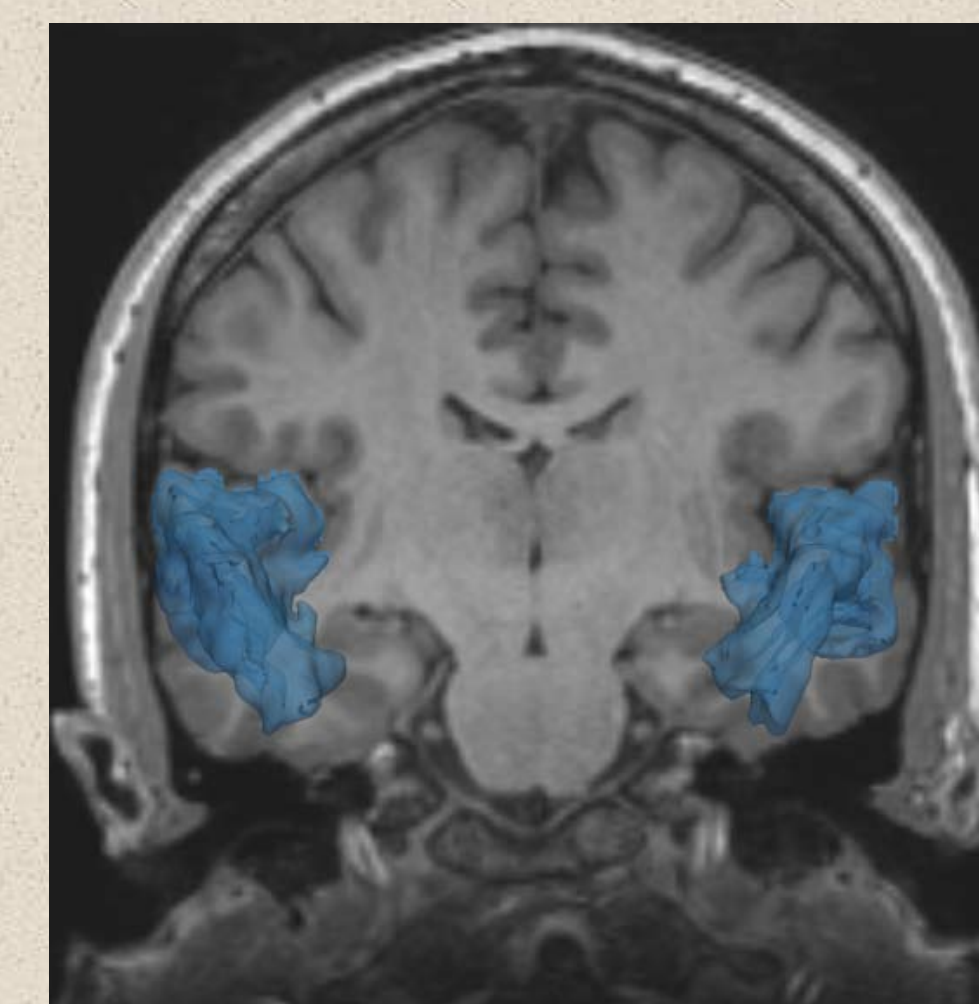


Figure 2: 3D rendering of STG gray matter

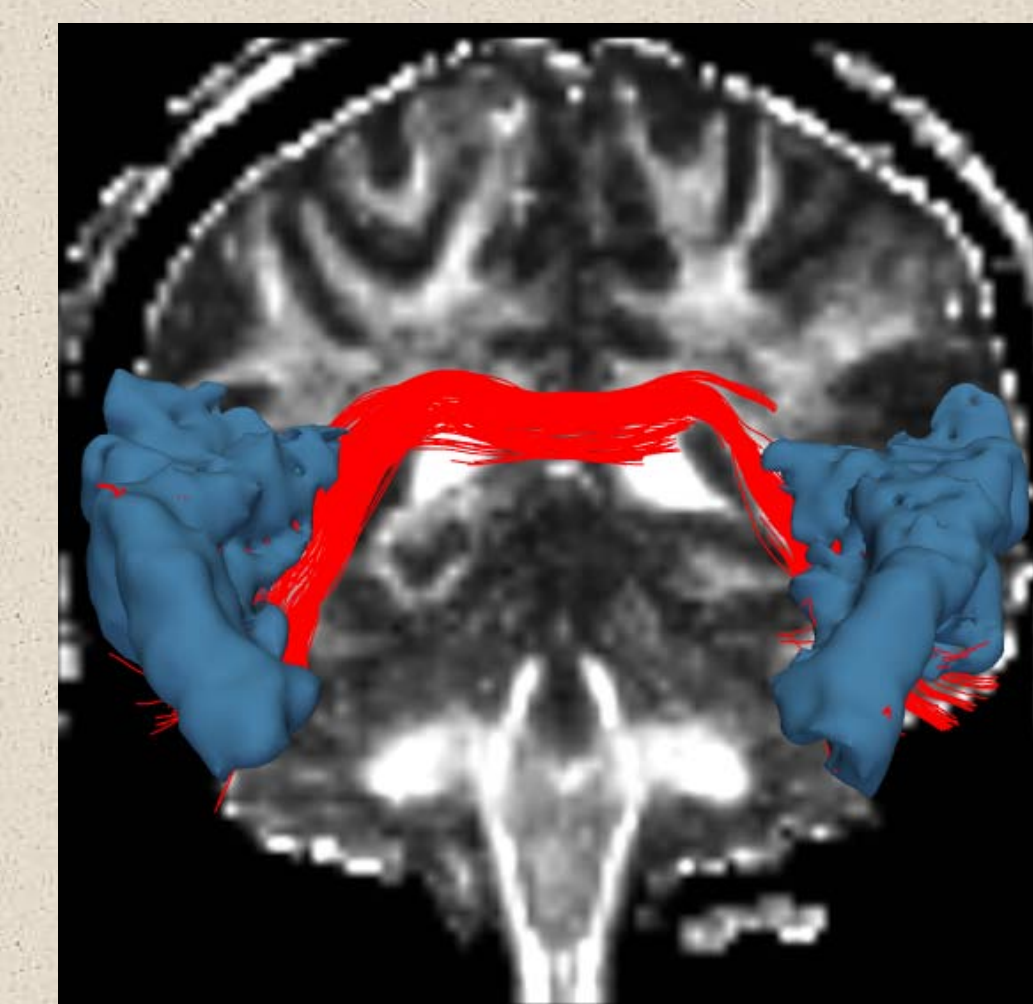


Figure 3: Coronal view of white matter fiber tracts connecting bilateral STG, overlaid on an FA map

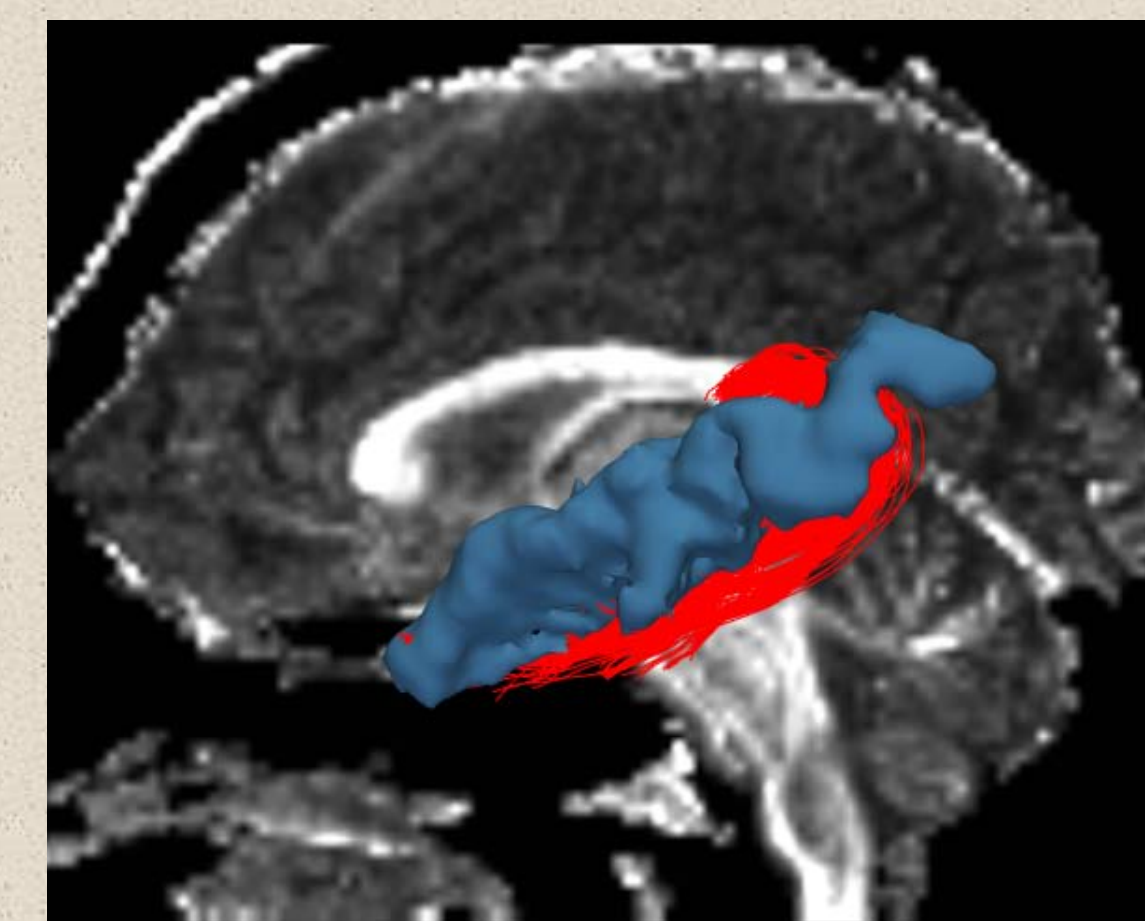


Figure 4: Sagittal view of white matter fiber tracts connecting left and right STG, overlaid on a FA map

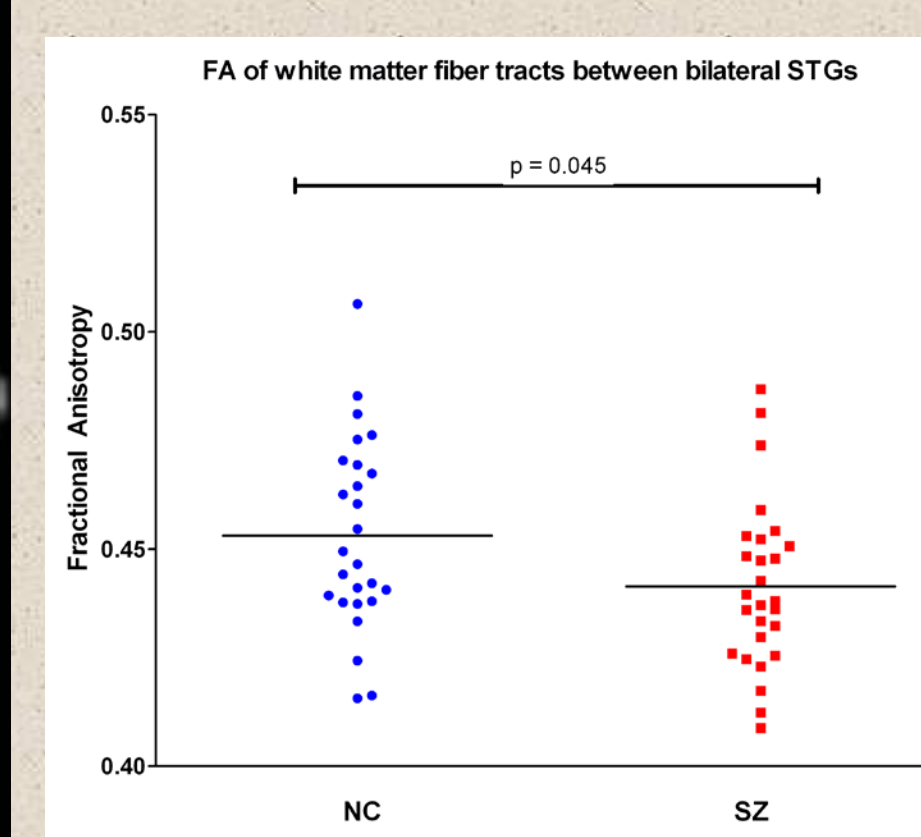


Figure 5: Group difference in mean FA

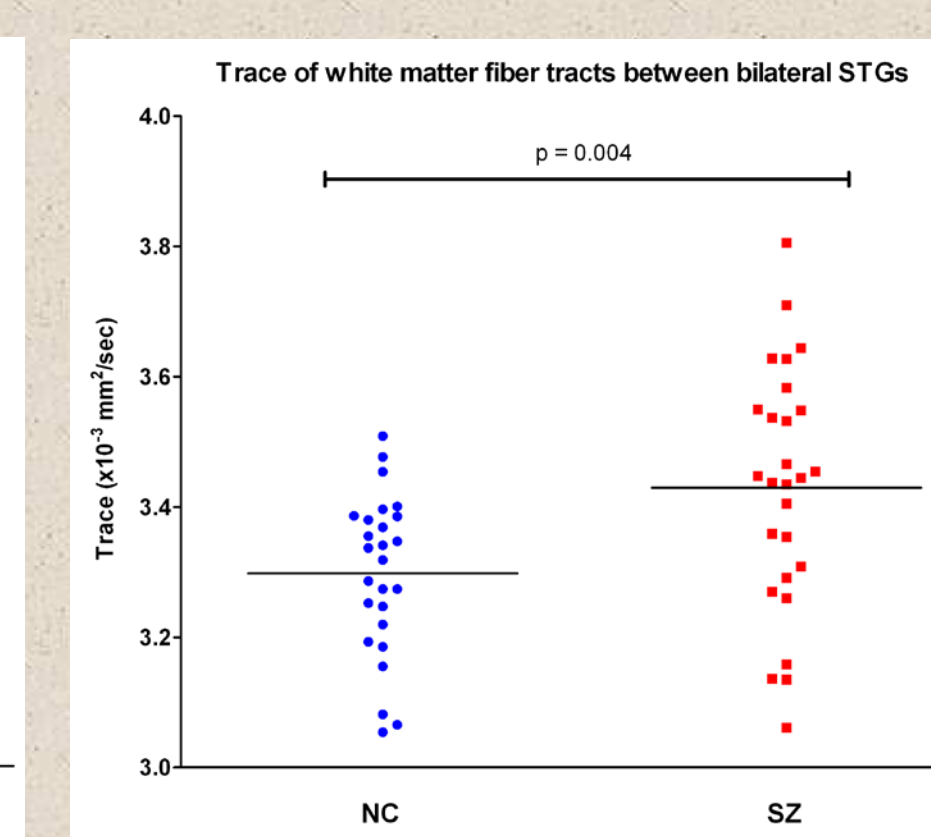


Figure 6: Group differences in mean trace

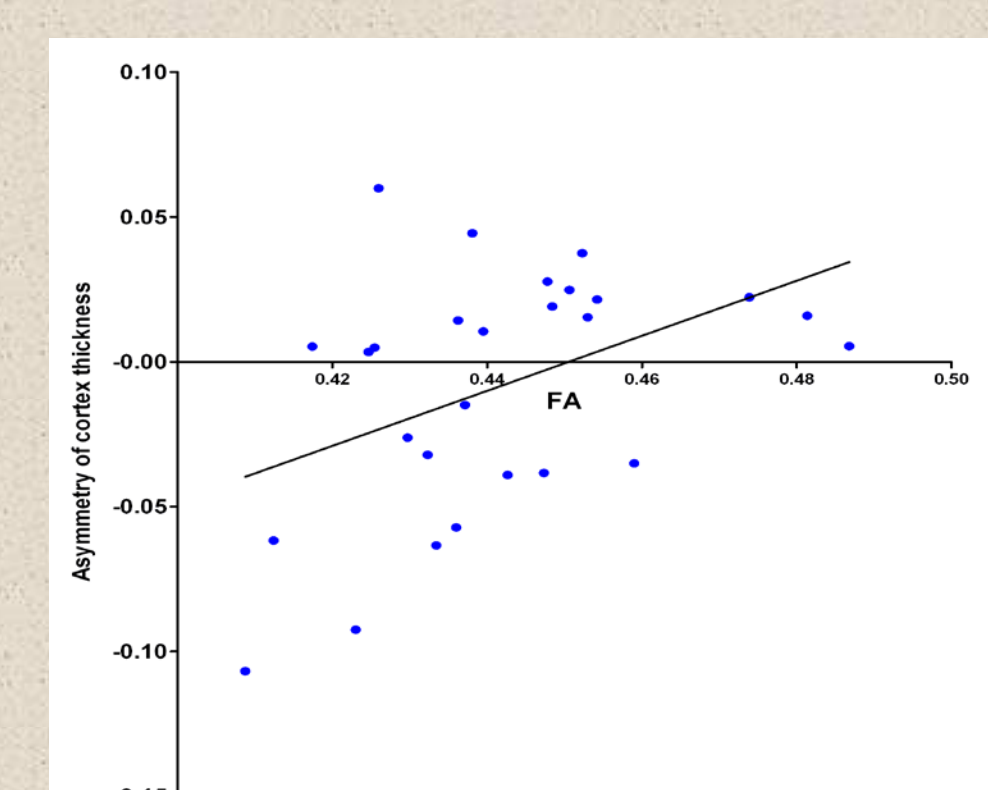


Figure 7: Correlation between mean FA and cortical thickness asymmetry

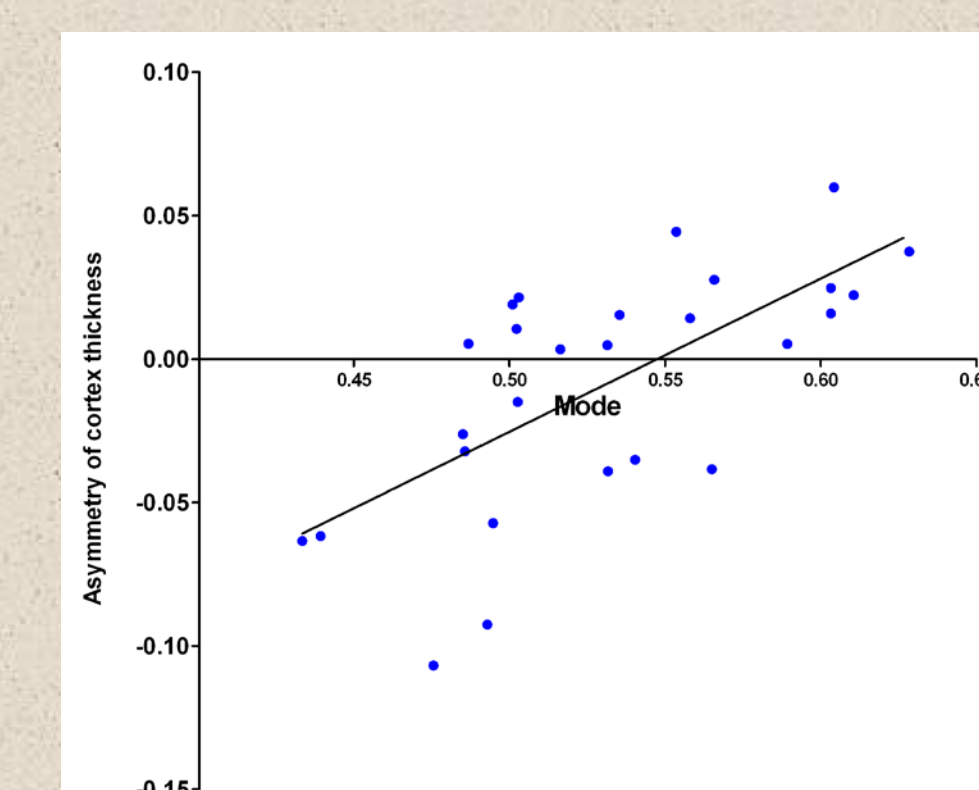


Figure 8: Correlation between mean Mode and cortical thickness asymmetry

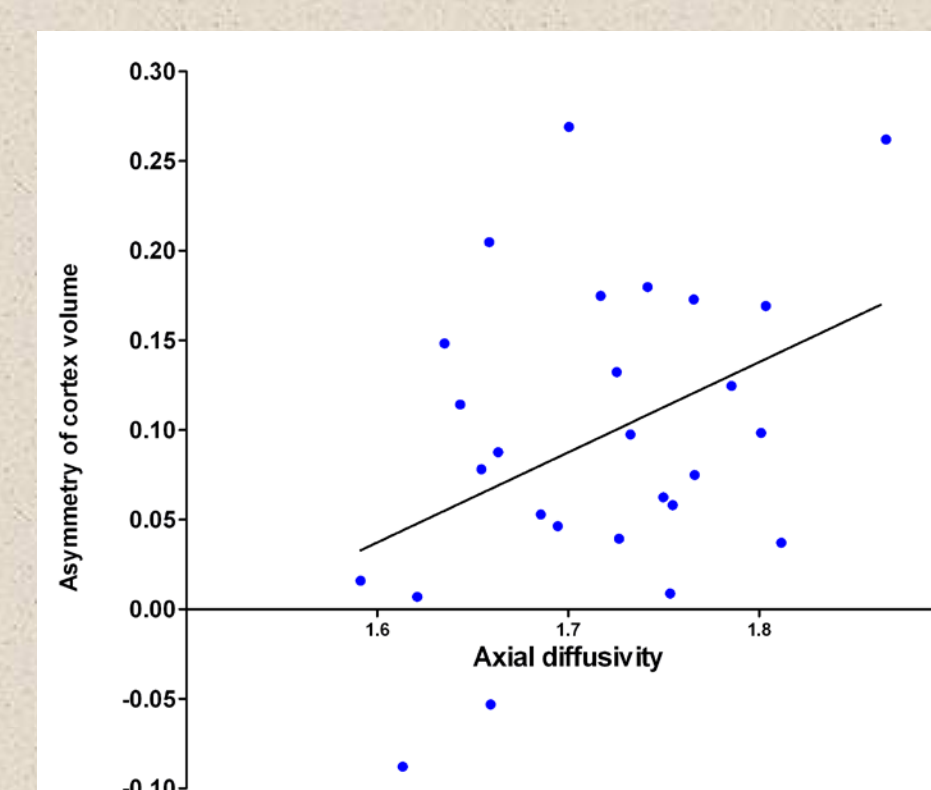


Figure 9: Correlation between mean AD and volume asymmetry

REFERENCES

- Shenton ME, Dickey CC, Frumin M, McCarley RW, "A review of MRI findings in schizophrenia", *Schizophr. Res.*, 49(1), pp. 1-52, 2001.
- Crow TJ, Paez P, Chance SA, "Callosal misconnectivity and the sex difference in psychosis", *Int. Rev. Psychiatry*, 19(4), pp. 449-457, 2007.
- Chance SA, Casanova MF, Switala AE, Crow TJ, "Auditory cortex asymmetry, altered minicolumn spacing and absence of ageing effects in schizophrenia", *Brain*, 131(12), pp. 3178-3192, 2008.
- Catani M, Allin MPG, Husain M, Pugliese L, Mesulam MM, Murray RM, Jone DK, "Symmetries in human brain language pathways correlate with verbal recall", *Proc. Natl. Acad. Sci. U.S.A.*, 104(43), pp. 17163-17168, 2007.
- Malcolm J, Shenton ME, Rathi Y, "Neural tractography using an unscented kalman filter", *Inf. Process. Med. Imaging*, pp.126-138, 2009.
- Maddah M, Kubicki M, Wells WM, Westin CF, Shenton ME, Grimson WE, "Findings in schizophrenia by tract-oriented DT-MRI analysis", *Int. Conf. Med. Image Comput. Assist. Interv.*, pp. 917-924, 2008.

METHODS

- Non-linear registration between structural and DTI data of each individual subject was performed, with the latter as reference.
- Freesurfer (<http://surfer.nmr.mgh.harvard.edu>) was used for segmenting and computing volume, surface area, cortical thickness of STGs gray matter (Figures 1 and 2) from structural MRI data.
- Asymmetry was assessed using the lateralization index [4]:
$$\text{Lateralization Index} = \frac{\text{Left} - \text{Right}}{[0.5 * (\text{Left} + \text{Right})]}$$
- Whole brain tractography from DTI data was derived using a novel filtered two-tensor method [5] developed in the Psychiatry Neuroimaging Lab.
- White matter fiber tracts of interest were extracted using STG gray matter as the regions of interest (ROIs).
- Extraneous tracts were removed through clustering [6].
- The mean FA, mode, trace, AD and RD of resulting fiber tracts (Figures 3 and 4) were then computed for each subject.

RESULTS

- The filtered two-tensor tractography method was able to reliably reproduce the fiber tracts between left and right STG gray matter for all subjects.
- Independent T-test revealed group differences for following DTI measures:
 - FA at $p = 0.045$ (Figure 5)
 - Trace at $p = 0.004$ (Figure 6)
 - AD at $p = 0.026$
 - RD at $p = 0.003$
- No group differences were found for STG gray matter asymmetry indexes.
- Pearson correlation test revealed following correlations in SZ group:
 - FA and cortical thickness asymmetry at $p = 0.023$ (Figure 7)
 - Mode and cortical thickness asymmetry at $p < 0.001$ (Figure 8)
 - AD and volume asymmetry at $p = 0.037$ (Figure 9)
- No correlations were revealed in NC group.

CONCLUSIONS

- Lower FA and higher trace in SZ suggest reduced white matter integrity, due likely to weaker myelination and/or lack of coherence in the inter-hemispheric white matter fiber tracts connecting bilateral STG.
- Higher AD and RD in SZ are likely due to the higher trace.
- Correlations between DTI and asymmetry measures in the SZ group suggest that the latter is implicated in schizophrenia.